

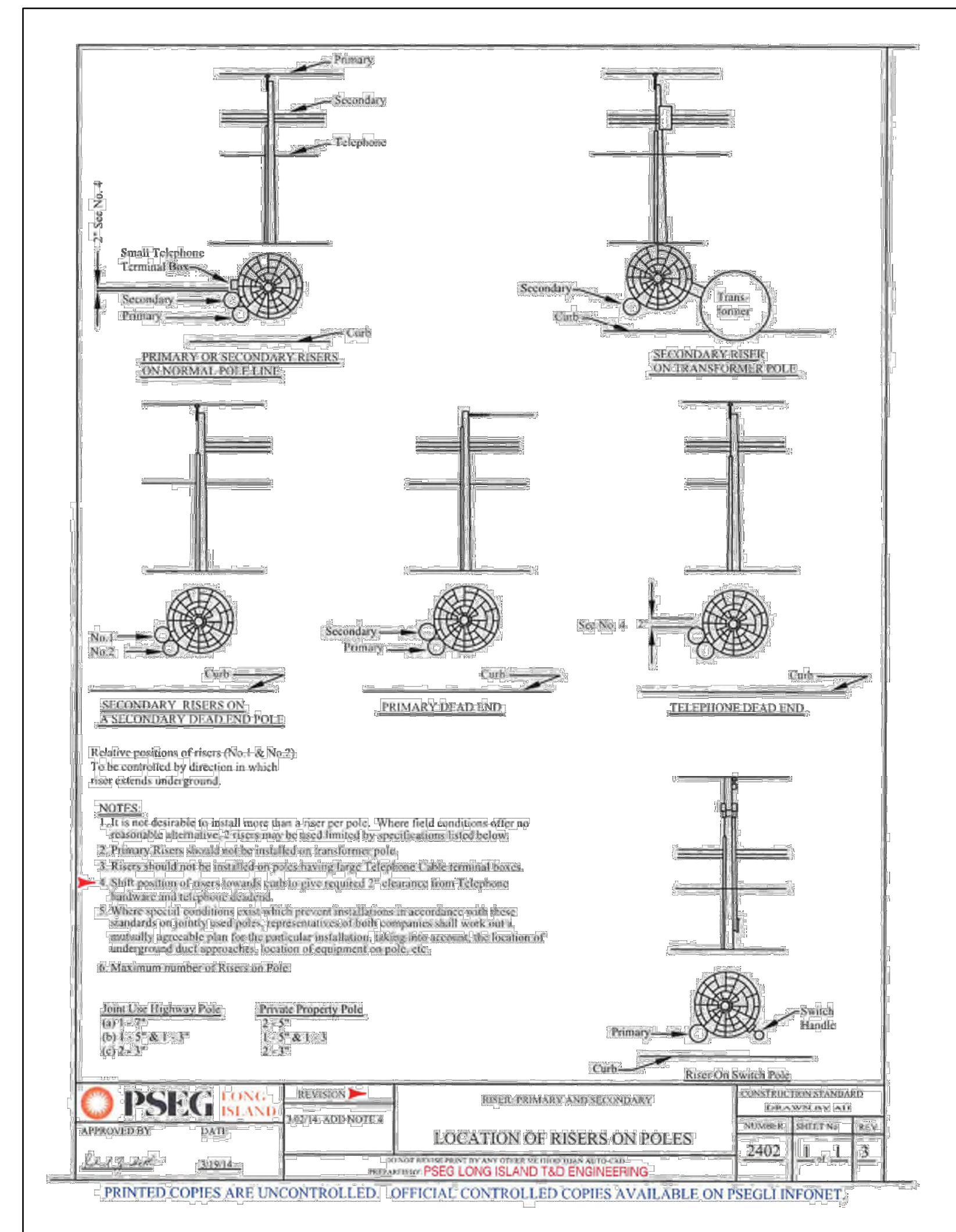
BILL OF MATERIAL			
ITEM	DESCRIPTION	QTY.	ITEM ID.
1	Back Plate, 5" Wide, 10' - 0" Long Plastic	+	125524
2	U-Guard 7" Wide, 5' - 0" Long, Galvanized	+	125528
3	Adapter, U-Guard, 7" Wide, 16" Long Galvanized	+	125529
4	Nail, Barbed 1/8" x 2" with Cushion	+	181009
5	Screw, Lag, 3/8" x 2-1/2"	+	181001
6	Staples, Copperweld, 1-1/2" x 5/16"	+	180001
7	Wire, Ground HDPE Insulated #6 Cu;	+	199046
8	Connector, Split Bolt	+	*124---
9	Duct Sealing Compound (See Note 5)	+	126048
10	Protector, Duct Edge	1	163004
11	Ground Rod, 1/2" x 8'-0"	1	173007
12	Ground Rod Connector, 1/2"	1	121065
13	Sweep, 5", 90°, 60" Radius, Galvanized	+	125617
14	Sweep, 5", 90°, 36" Radius, PVC	+	125514

NOTES:

1. Primary Riser - The top of the riser shall be 4" above the neutral.
2. Secondary Riser - There shall be a minimum of 40" separation between the top of the riser and communication cables. (Telephone, CATV, Fire, Etc.)
3. Place ground wire between backplate and pole.
4. Use barbed nail with cushion to secure backplate to pole. Do Not drive nail all the way home, just enough to make contact between cushion and backplate. Use 3/8" x 2-1/2" lag to secure U-Guard.
5. Apply sealing compound at duct entrance to keep out water. See CS-5520 for details.
6. Galvanized steel U-Guards shall be used for a minimum of 10' above grade. Each section of galvanized U-Guard shall be over lapped by 2" and grounded.
7. All three phase 480Y/277 Volt secondary risers shall be installed to the primary configuration height (i.e. terminated ABOVE the system neutral).

+ AS REQUIRED REVISION CS # 2407 REV. 1
* MISSING DIGITS BY TYPE OR SIZE SHEET # 2 of 2

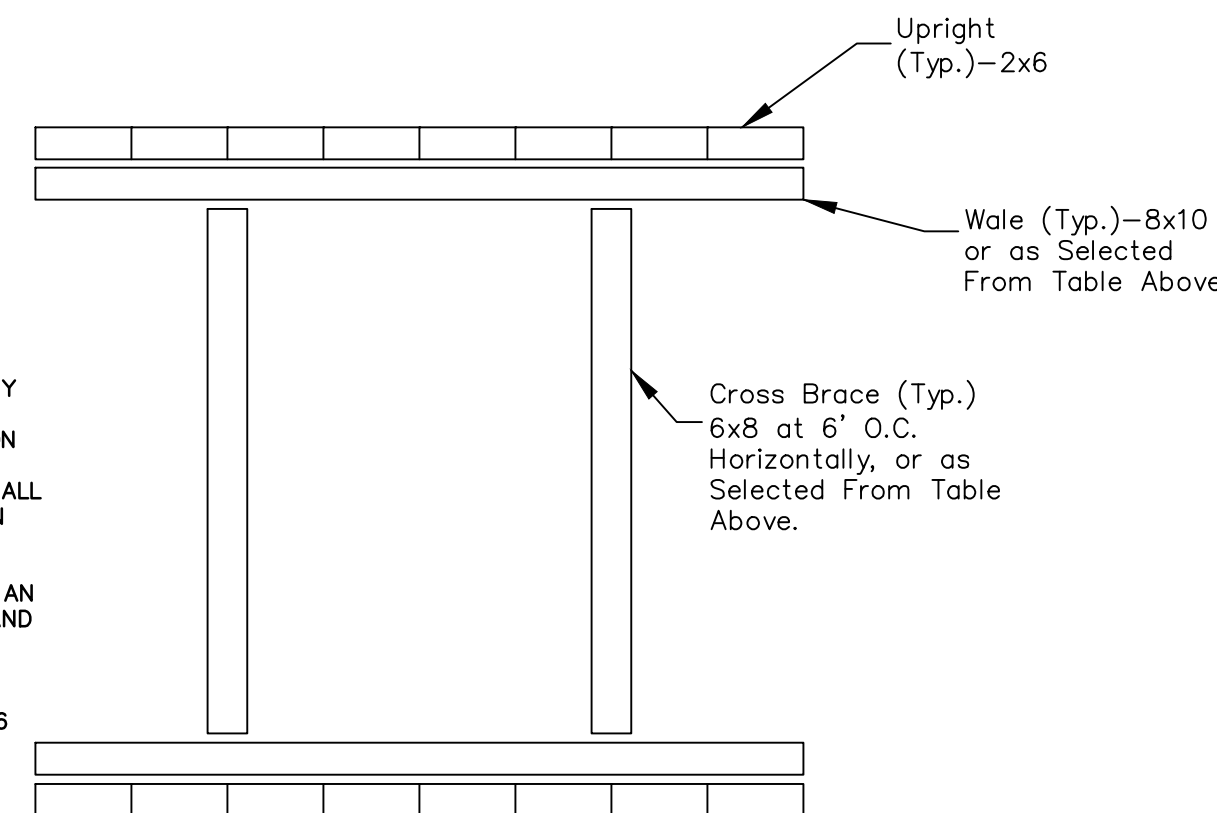
PRINTED COPIES ARE UNCONTROLLED. OFFICIAL CONTROLLED COPIES AVAILABLE ON NATIONAL GRID INFONET AT: <http://us2infonet/sites/Procedure>



TIMBER TRENCH SHORING
MINIMUM TIMBER REQUIREMENTS
(DEPTH OF TRENCH 5-10 FEET)

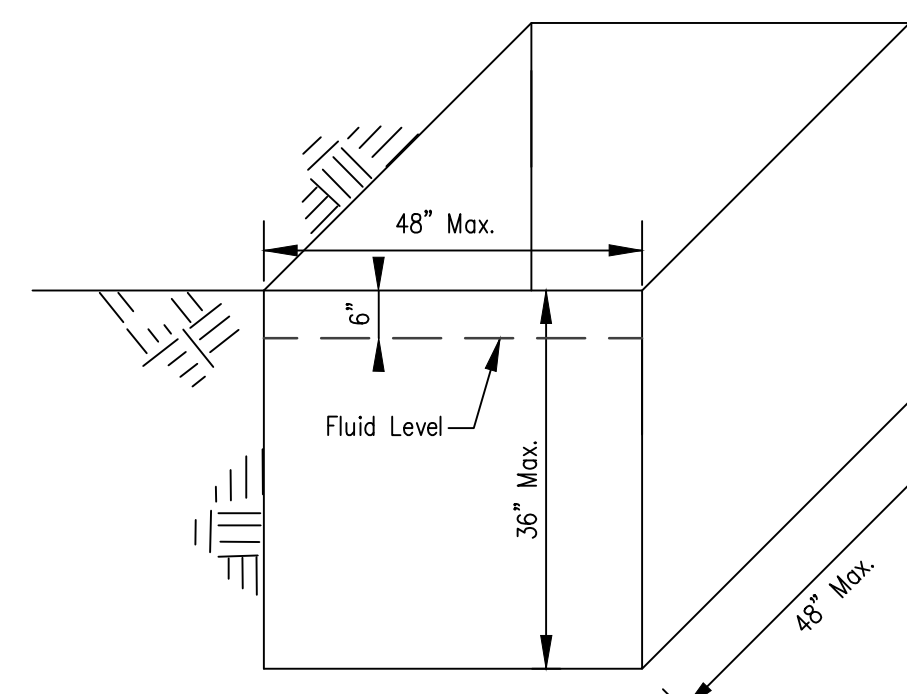
HORIZONTAL SPACING (FEET)	CROSS BRACES					VERTICAL SPACING (FEET)	WALES		UPRIGHTS
	UP TO 4	UP TO 6	UP TO 9	UP TO 12	UP TO 15		SIZE (IN)	VERTICAL SPACING (FEET)	
UP TO 6	6X8	6X8	6X8	8X8	8X8	5	8X10	5	2X6
UP TO 8	8X8	8X8	8X8	8X8	8X10	5	10X12	5	2X6
UP TO 10	8X10	8X10	8X10	8X10	10X10	5	12X12	5	2X6

- OSHA CHAPTER 1926 SUBPART P APP C - TIMBER SHORING FOR TRENCHES
- MIXED OAK OR EQUIVALENT WITH A BENDING STRENGTH NOT LESS THAN 850 PSI.
- BASED ON SOIL TYPE C



1. CONTRACTOR SHALL PROTECT WORKERS AND THE PUBLIC AT ALL TIMES, IN ACCORDANCE WITH ALL APPLICABLE LAWS.
2. OSHA CHAPTER 1926 SUBPART P, PROVIDES FOR THE PROTECTION OF WORKERS ENTERING EXCAVATIONS BY BENCHING BACK THE EXCAVATIONS.
3. WHEN BENCHING OF THE EXCAVATION IS NOT PRACTICAL DUE TO SITE CONSTRAINTS, THE CONTRACTOR SHALL SHEET AND SHORE THE EXCAVATION TO THE MINIMUM TIMBER SHORING REQUIREMENTS SHOWN HERE.
4. SHOULD THE CONTRACTOR CHOOSE AN ALTERNATE METHOD OF SHEETING AND SHORING, THE CONTRACTOR SHALL ENSURE THAT THIS METHOD IS DESIGNED AND IMPLEMENTED ACCORDING TO OSHA CHAPTER 1926 SUBPART P.

PLAN VIEW - TRENCH SHORING



DETAIL TYPICAL HDD ENTRY/EXIT PIT

N.T.S.

NOTE: DEPTH OF HDD ENTRY/EXIT PITS SHALL NOT EXCEED 5' AND AS SUCH, SHEETING AND SHORING SHALL NOT BE REQUIRED.

PRELIMINARY FOR INFORMATION ONLY

NOT FOR CONSTRUCTION

<p>BL Companies ARCHITECTURE ENGINEERING PLANNING LANDSCAPE ARCHITECTURE LAND SURVEYING ENVIRONMENTAL SCIENCES</p> <p>274 Madison Ave, Suite 1401 New York, NY 10017 (212) 512-6543</p>	PSEG-LI SOUTHOLD-SHELTER ISLAND SOUTHOLD, GREENPORT & SHELTER ISLAND, SUFFOLK COUNTY, NY INSTALLATION OF ELECTRIC CABLE			
	PSEG-LI 117 Station Path Rutherford, New York 11901			
	SCALE AS NOTED	VENDOR DN-03	SHEET NO. 32 OF 46	
NO. DATE W.O.	ISSUED FOR BID/PERMIT DESCRIPTION	DESIGNED BY DWN BY	CHECKED BY CDO BY	REVIEWED BY PC/OZ APPROVED BY APPD
SYSTEM GRID NUMBER	CARNET NO.	FOLDER NO.		